

HIGHLIGHTS

2025 Trends in Access Control Report

Mercury surveyed over 450 physical security professionals across North America and Europe, including administrators, end users and system partners from a wide range of industries.

Priorities in choosing physical access controllers

Percentage of respondents ranking factor in the top three priorities



Reliability and uptime

63%



Cost-effectiveness

34%



Cybersecurity features

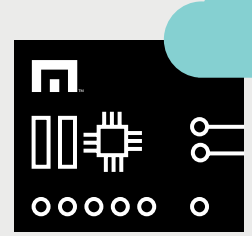
33%

The Growing Importance of the Cloud



50%

reported that cloud connectivity was one of the most important trends influencing controller purchases



52%

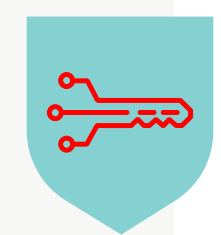
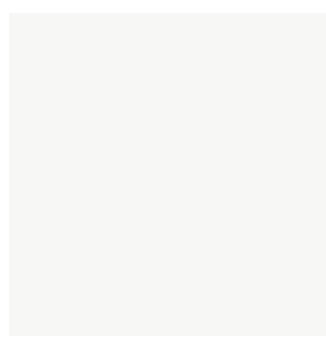
already have cloud-enabled controllers

Cybersecurity Takes Center Stage



90%

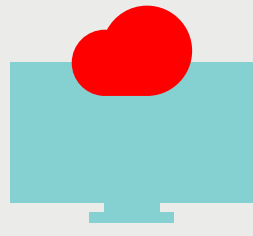
of respondents stay current with evolving cybersecurity and data protection standards



71%

say advanced cybersecurity is one of the most important current trends influencing controller purchase

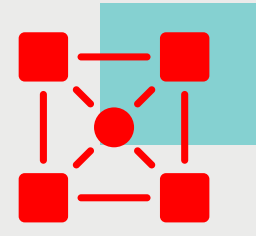
IoT and the Intelligent Edge



Edge computing

Localized decision-making improves speed and reliability

44% exploring or adopting



IoT integration

IoT connects controllers with HVAC, lighting and sensors to enhance efficiency

37% identify IoT as a top trend

The AI-Enabled Future

App-ready controllers may enable organizations to adopt future AI capabilities via software updates rather than hardware replacement.



Video surveillance integration

56%



Facial recognition and biometric authentication

54%



Predictive security and threat prevention

46%

Physical access control is evolving quickly. Choosing the right controllers supports scalability, security and the flexibility to adopt innovation cost-effectively.

Read the full report to learn more about the future of access control.



[GET THE REPORT](#)